



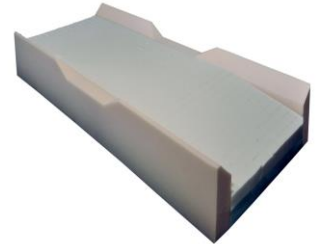
Joerns® Non-Powered Foam Surfaces:

All Joerns® Non powered surfaces have firm transfer borders, low shear, fluid proof, stain resistant, anti-bacterial, and anti-fungal covers with optional built in raised perimeters. These surfaces also have strategically located base cuts that allow the surface to articulate with the pivot points of a full electric or hospital bed. The significantly sloped heel section is 2" lower than the head section which assists pressure redistribution by alleviating pressure from the high-risk heel area.

Joerns® Deluxe 500 is a multi-layer therapeutic high density polyurethane foam mattress with a 500lb weight capacity. The contoured top layer is designed to provide excellent user comfort and optimize pressure redistribution.

Joerns® Elite-G 500/600 has a high density polyurethane foam base topped with a 2" gel infused immersive memory foam top layer that provides a cooling surface combined with the enhanced pressure redistribution, comfort and durability of visco elastic foam. **This surface is available with a 500lb or 600lb weight capacity.**

Optional Raised Perimeter:

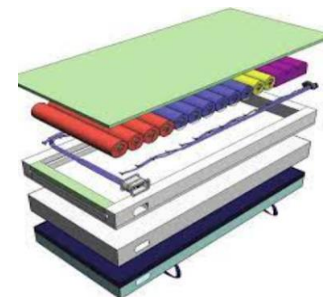


Joerns® Hybrid Foam/Air Surface:

(Can be used as non powered OR powered)

Joerns® P.R.O. Matt® Plus is a dynamic, non-powered, air filled, foam topped mattress replacement system featuring our Pressure Redistribution Optimization (P.R.O.) Technology. With the addition of an optional control unit, the mattress provides powered immersion or alternating pressure therapy, allowing facilities to use one mattress for both pressure injury prevention and treatment. These features make the P.R.O. Matt® Plus a versatile and cost effective surface to meet an individual's changing needs.

Like all our foam surfaces it comes with firm transfer borders, a low shear, fluid proof, stain resistant, anti-bacterial, and anti-fungal cover and is also available with optional built in raised perimeters.



Optional P.R.O. Pump:



Joerns® Powered Air Surfaces:

Our **DermaFloat®** surfaces have unique, integrated, inflatable, on-demand bilateral side bolsters called **CairRails**. These consist of four-inch side air bolsters on each side of the resident, providing additional support and a more stable care environment. While providing vital therapy for the resident, powered air support surfaces can leave gaps between the surface and the bed frame. **CairRails** address this concern by filling the gap between the surface and the side rails to help reduce the risk of entrapment and resident falls.

On Demand CairRails:



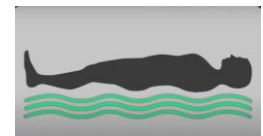
DermaFloat® LAL is a powered air system that provides pressure redistribution by combining low air loss with pulsation. Low air loss therapy has been demonstrated to reduce the risk of pressure injuries as well as being a valuable aid in the treatment of pressure injuries. The pulsation feature may provide additional resident comfort and enhance the lymphatic system. Available in 36" and 42" widths, the DermaFloat LAL is designed as a mattress replacement system for residents weighing up to 500 lbs.



DermaFloat® APL is a powered air system that provides pressure redistribution by alternating pressure between adjacent (A-B) air cells. Alternating pressure can aid the healing process by increasing circulation to the resident's wounds. The DermaFloat APL also offers low air loss therapy through an integrated air delivery system beneath the therapy pad. The combination of these modalities are known to be valuable aids in the treatment of pressure injuries. The DermaFloat APL's Fowler Boost AUTOMATICALLY inflates the sacral section enhancing pressure redistribution when head of bed is elevated 30° or greater.



Dolphin® FIS® Fluid Immersion Simulation System is an advanced therapy system designed to provide state-of-the-art pressure redistribution by simulating the effects of a body immersed in a fluid medium. The Dolphin System automatically measures the specific characteristics of the individual patient as they engage the support surface creating an individualized immersion profile that creates a near neutral buoyant state. The Dolphin FIS System delivers three-dimensional volumetric engagement and eliminates gradient shear forces, leading to positive outcomes for flaps, grafts, and pressure injuries. The Dolphin technology provides minimal tissue deformation, while maintaining near normal blood flow leading to improved tissue perfusion and wound healing.



Joerns® Bariatric Surfaces:

Joerns® Bari-Gel 1000 has a high density polyurethane foam base topped with a 2" gel infused memory foam top layer that provides a cooling surface combined with the enhanced pressure redistribution, comfort and durability of visco elastic foam with a 1000lb weight capacity.



*This mattress is not available with optional raised perimeters.

Joerns® Bari-Matt 1000 Plus is a uniquely designed expandable foam bariatric mattress that provides caregivers six different configurations to meet the needs of all of their bariatric patients. This flexibility can help reduce costs while ensuring optimal clinical outcomes. Designed to enhance the comfort of the Joerns Bari10A bed frame, the convenient side expansion panels conveniently zip on and off to allow ease of patient care and transport.



Arise® 1000 EX is an expandable therapy system that provides pressure redistribution by combining low air loss with pulsation for patients weighing up to 1000lbs. This product has been specifically designed for the unique features of the Joerns Bari10A bed frame and its capability to extend and contract in width and length. The Arise 1000 EX also comes standard with CairRails.



Dolphin® FIS® Fluid Immersion Simulation System is available in 42" and 48" widths, with a 1000lb weight capacity. The Dolphin® FIS® is an advanced therapy system designed to provide state-of-the-art pressure redistribution by simulating the effects of a body immersed in a fluid medium. The Dolphin System automatically measures the specific characteristics of the individual patient as they engage the support surface creating an individualized immersion profile that creates a near neutral buoyant state. The Dolphin FIS System delivers three-dimensional volumetric engagement and eliminates gradient shear forces, leading to positive outcomes for flaps, grafts, and pressure injuries. The Dolphin technology provides minimal tissue deformation, while maintaining near normal blood flow leading to improved tissue perfusion and wound healing.



Joerns® Surfaces are designed to be compatible with Joerns® Bed Frames
CONTACT YOUR MEDSUPPLY SALES REP FOR MORE INFORMATION

WeCare®



EasyCare®



UltraCare®XT



RC Ultra Hi-Lo 850®



Bari10A®

